

Term of References

Pengadaan Jasa Pengembangan Aplikasi Berbasis Microsoft Dynamics 365

Latar belakang

1. Adanya penggunaan Microsoft Dynamics NAV 2017 untuk hampir keseluruhan proses bisnis WWF-ID seperti *finance, accounting, procurement, consultant payment, asset management, grant management, travel management, advance management* yang sudah berusia 10 tahun.
2. Kebutuhan akan pengembangan **sistem keuangan** dan *grant management* yang baru sebagaimana tertuang pada dokumen **Term of Reference (ToR) - Sistem Keuangan dan Grant Management** yang dirumuskan oleh departemen **Finance and Accounting** dan **Grant and Financial Management**.
3. Kebutuhan akan pengembangan **procurement** dan **asset management system** yang baru sebagaimana tertuang pada dokumen **Term of Reference (ToR) - Procurement & Asset Management** yang dirumuskan oleh departemen **General Support**.
4. Kebutuhan akan peningkatan **human resource planning system** sebagaimana tertuang pada dokumen **TOR - Harapan App Enhancement** yang dirumuskan oleh departemen **People and Culture**
5. Kebutuhan untuk menindaklanjuti **WWF-ID's Digital Transformation Project** sebagaimana tertuang pada dokumen **Project Charter** dengan nomor dokumen **WWFID-ICT-PCD-25001** yang dirumuskan oleh departemen **Information, Communication, and Technology**.

Maksud dan Tujuan

1. Pengadaan jasa pengembangan aplikasi berbasis Microsoft Dynamics 365 oleh pihak ketiga untuk menindaklanjuti hal-hal yang dijabarkan pada bagian latar belakang.

Output yang diharapkan

1. Sebuah proposal jasa pengembangan aplikasi berbasis Microsoft Dynamics 365 oleh pihak ketiga dengan spesifikasi sebagai berikut:

Service Provider Requirements	
Grade	Official Microsoft Partner
Specializations	Business Applications <ul style="list-style-type: none"> - Low Code Application Development - Small and Midsize Business Management
Expertise	Services <ul style="list-style-type: none"> - Consulting - Custom solution - System integration Solution Category <ul style="list-style-type: none"> - Application integration - Data warehouse - Information management Industries <ul style="list-style-type: none"> - Nonprofit & IGO Products <ul style="list-style-type: none"> - Dynamics 365 - Microsoft 365 - Power Platform - SQL - Teams
Accomplishment	<ul style="list-style-type: none"> - Gold Enterprise Resource Planning - Gold Application Development - Gold Data Analytics
Service Requirements	
Dynamics 365 Business Central	Financial Management <ul style="list-style-type: none"> • General Ledger: <ul style="list-style-type: none"> - Chart of accounts configuration. - Multi-dimensional reporting. - Periodic financial closure processes. - Automatic reconciliation processes and audit trails. • Bank and Cash Management (Treasury): <ul style="list-style-type: none"> - Multi-currency bank account management. - Foreign exchange management. - Bank reconciliation and cash flow forecasting. - Automated payment processing integrated with bank's system. - Cash level management module, all transaction (restricted and unrestricted fund) are able to comply with three-way match system within budget, expenditure, and cash level.

	<ul style="list-style-type: none"> • Accounts Payable and Receivable: <ul style="list-style-type: none"> - Vendor and customer (donor) account management. - Automated payment and receipt processing integrated with bank's system. - Integration with procurement processes. - Standard reports such as outstanding payable/vendor and aging reporting. - Deferred account management (restricted). <p>Budgeting and Forecasting</p> <ul style="list-style-type: none"> • Budgeting: <ul style="list-style-type: none"> - Input and storage of agreed and revised budgets. - Budgetary control by COA, Donor, and Activities/Tasks. - Reporting on budget consumption and variance. • Forecasting: <ul style="list-style-type: none"> - Monthly, quarterly, semi-annual, annual, and grant period forecasting. <p>Procurement</p> <ul style="list-style-type: none"> • Procurement Management: <ul style="list-style-type: none"> - Purchase order management and approval workflows. - Commitment recording for all purchases and contracts. - Integration with accounts payable and inventory management. - Procurement planning tools. <p>Asset and Inventory Management</p> <ul style="list-style-type: none"> • Asset Management: <ul style="list-style-type: none"> - Integration with procurement and GL. - Depreciation management. - Barcode capability for physical inventory. <p>System Operation and Security</p> <ul style="list-style-type: none"> • User Access and Security Management: <ul style="list-style-type: none"> - Role-based security and data access controls. - Audit trails and compliance monitoring. <p>Human Resources and Payroll</p> <ul style="list-style-type: none"> • Payroll Management: <ul style="list-style-type: none"> - Payroll processing GL integrated with SunFish HRIS. <p>Reporting and Analytics</p> <ul style="list-style-type: none"> • Financial Reporting: <ul style="list-style-type: none"> - Trial balance, detailed ledger listing, and expenditure reports. - Budget variance analysis. - Customizable reporting templates and exportable to Excel. • Operational Reporting: <ul style="list-style-type: none"> - Reports on expenditure according to the PMEL structure. <p>System Operation and Security</p>
--	--

	<ul style="list-style-type: none"> • User Access and Security Management: <ul style="list-style-type: none"> - Role-based security and data access controls. - Audit trails and compliance monitoring.
Power Platform	<p>Dynamics 365 Dataverse</p> <ul style="list-style-type: none"> - Setup the Dynamics 365 Dataverse environment to be used as the WWF-ID's "umbrella application". <p>Planning, Monitoring, Evaluation, and Learning (PMEL) Application</p> <ul style="list-style-type: none"> - Importing PMEL application. - Making changes to the PMEL application based on WWF-ID's business requirements. - Integrate the PMEL application with the other application (Business Central, Procurement, Human Resource Planning, etc.). <p>Human Resource Planning (HRP) Application</p> <ul style="list-style-type: none"> • Functionality Improvement: Enhance existing features related to HR planning and recruitment. • Additional Features: Develop new functionalities for: <ul style="list-style-type: none"> - Employee selection and onboarding. - Contract management. - Performance management. - Offboarding processes. - Live-report dashboard for real-time HR analytics. • Integration: Integrate the Harapan Application with other WWF Indonesia's Microsoft based applications, especially consultant payments via Dynamics 365 Business Central. <p>Procurement & Asset Management Application</p> <ul style="list-style-type: none"> • Application Design and Development: Create an application using Power Platform that supports: <ul style="list-style-type: none"> - Procurement processes from requisition to payment. - Asset management including tracking, maintenance schedules, and depreciation management. - User-friendly interfaces and dashboards for data visualization. • Integration: Ensure seamless integration with other WWF Indonesia's Microsoft based applications. <p>Travel & Advance Management Application</p> <ul style="list-style-type: none"> • Application Design and Development: Create an application using Power Platform that supports: <ul style="list-style-type: none"> - Activity advance process management starting from request to settlement.

	<ul style="list-style-type: none"> - Travel management starting from authorization to settlement. - User-friendly interfaces both for web and mobile. Including dashboards for data visualization. <ul style="list-style-type: none"> • Integration: Ensure seamless integration with other WWF Indonesia's Microsoft based applications. <p>Reporting and Analytics</p> <ul style="list-style-type: none"> • Dashboard Development: Create various interactive dashboards using Power BI to allow adaptive management. • Compliance Reporting: <ul style="list-style-type: none"> - Financial reporting for the donors according to the WWF network standard. - Technical progress reporting according to the WWF network standard. - Financial reporting for external audit requirements. - Miscellaneous other reports. <p>Approval and Collaboration</p> <ul style="list-style-type: none"> - Leverage Power Automate and Microsoft Teams for approval and collaboration.
Service Delivery & Scope Requirements	
Dynamics 365 Business Central	<ul style="list-style-type: none"> • Fixed-Scope Development Service Based on the requirements outlined in the Service Requirements section above. • Additional Bucket Man-days 50 Man-days for any additional change request which also possible to be converted into post go-live maintenance. The time frame for the SLA is three days, starting from the moment a backlog request is submitted by WWF-ID to the vendor and ending when the modification or new development has been started. • Software Development Methodology The expected methodology is Agile. • Dedicated Teams The vendor is required to provide a dedicated team. The team must include at least one person who holds a senior certification relevant to Dynamics 365 Business Central, such as Microsoft Certified: Dynamics 365 Business Central Functional Consultant Associate or an equivalent certification.
Power Platform	<ul style="list-style-type: none"> • Bucket Man-days Development Service The vendor is required to submit an estimated number of man-days required to develop the expected features. However, these man-days

	<p>are flexible and can be utilized for any development as long as it leverages Power Platform technologies. This approach allows for flexibility in feature development and adaptation as needs evolve. The time frame for the SLA is three days, starting from the moment a change or new development request is submitted by WWF-ID to the vendor and ending when the modification or new development has been started.</p> <ul style="list-style-type: none"> • Software Development Methodology The expected methodology is Agile. • Dedicated Teams The vendor is required to provide a dedicated team. The team must include at least one person who holds a senior certification relevant to Power Platform, such as Microsoft Certified: Power Platform Solution Architect Expert or an equivalent certification.
Deliverables	
Product	A Dynamics 365 Business Central and Power Platform based applications in accordance with the specifications given in service requirements section.

Jangka Waktu Pelaksanaan Pekerjaan

Pekerjaan ini diharapkan akan dimulai di bulan September dan seluruh aplikasi diharapkan akan *go-live* bertepatan pada pergantian *fiscal year 26* yaitu tanggal 1 Juli 2025.

Informasi Tambahan Untuk Vendor

Dalam rangka mempermudah dan mempercepat *vendor* dalam pembuatan proposal serta menentukan harga, berikut disampaikan informasi-informasi tambahan yang dapat dijadikan acuan:

1. Existing Dynamics NAV Assessment Result and Plan

Module	Gap No	Requirement Description	Type	Fit / Gap	In/Out Scope	Complexity	Recommendation Vendor	REMARKS	Eff. FDD	Eff. Dev	Eff. Test	Eff. Rev	Eff. Total	Dev (%)	Test (%)	Total (%)
Procurement	PUR-01	Purchase Requisition	Feature	Gap	Out	High	Move to powerapps - Procurement						0	0%	0%	0%
Procurement	PUR-02	Purchase Bidding	Feature	Gap	Out	High	Carry over NAV to BC	Purchase Requisition dari power apps Dilanjutkan di BC	1,25	1,25			2,5	0%	0%	0%
Procurement	PUR-03	Purchase Order	Feature	Fit	In								0	0%	0%	0%
Procurement	PUR-04	Purchase Invoice	Feature	Fit	In								0	0%	0%	0%
Procurement	PUR-05	Purchase Credit Memo	Feature	Fit	In								0	0%	0%	0%
Procurement	PUR-06	Approval Purchase Requisition	Feature	Gap	Out	Medium	Carry over NAV to BC		1,25	1,25			2,5	0%	0%	0%
Procurement	PUR-07	Approval Purchase Order	Feature	Fit	In								0	0%	0%	0%
Procurement	PUR-08	Posted Purchase Requisition	Feature	Gap	Out	High	Move to powerapps - Procurement	Posted ada, tp belum terlalu sering dipake. Setelah approval, maka akan masuk ke posted Purchase Requisition					0	0%	0%	0%
Procurement	PUR-09	Posted Purchase Bidding	Feature	Gap	Out	High	Carry over NAV to BC	Posted ada, tp belum terlalu sering dipake. Setelah approval, maka perlu akan masuk ke posted Purchase Bidding	1,25	1,25			2,5	0%	0%	0%
Procurement	PUR-10	Posted Purchase Receipt	Feature	Fit	In								0	0%	0%	0%
Procurement	PUR-11	Posted Purchase Invoice	Feature	Fit	In								0	0%	0%	0%
Procurement	PUR-12	Posted Purchase Credit Memo	Feature	Fit	In								0	0%	0%	0%
GCMS	AR-06	Donation Cash Receipt	Feature	Gap	Out	High	Carry over NAV to BC	Sebuah receipt dengan kode awal DNRV setelah melakukan posted Donation Order					0	0%	0%	0%
GCMS	AR-07	Donor Ledger Entries	Feature	Gap	Out	High	Carry over NAV to BC	Sub GI dari AR FA. Masuk BC?					0	0%	0%	0%
GCMS	SUB-08	Consultant	Feature	Gap	Out	High	Move to powerapps - IHRP						0	0%	0%	0%
Job	JOB-01	Job Master	Feature	Fit	In			Hasrusnya masuk Human Resources					0	0%	0%	0%
Job	JOB-02	Job Activity	Feature	Fit	In								0	0%	0%	0%
Job	JOB-03	Job Planning	Feature	Fit	In								0	0%	0%	0%
Job	JOB-04	Job Budget	Feature	Fit	In								0	0%	0%	0%
Job	JOB-05	Job Actual Cost	Feature	Fit	In								0	0%	0%	0%
Job	JOB-06	Job Invoice	Feature	Fit	In								0	0%	0%	0%
Job	JOB-07	Job Budget Control	Feature	Gap	Out	High	Carry over NAV to BC	Check budget 3 way match system. Validasi pengajuan budget masih ada atau tidak. Di ERP sekarang sudah ada, tapi belum di aktifin. Di BC set bisa flexible control nya (by project, MAC or CoA)	1,25	1,25			2,5	0%	0%	0%
Job	JOB-08	Job Monitoring Report	Report	Gap	Out	Medium	Carry over NAV to BC	Budget Monitoring. Bisa export report dalam bentuk excel dari budget monitoring. Di BC apakah ada restriction by Grant Officer.	1,25	1,25			2,5	0%	0%	0%
Advance	ADV-01	Activity Advance	Feature	Gap	Out	High	1. Move to powerapps - Advance Mgmt 2. Carry over NAV to BC	Melakukan advance di PowerApps. Pemrosesan oleh Finance di BC. Need Adjustment	1,25	1,25			2,5	0%	0%	0%
Advance	ADV-02	Travel Advance	Feature	Gap	Out	High	1. Move to powerapps - Travel Mgmt 2. Carry over NAV to BC	Melakukan advance di Power Apps. Pemrosesan oleh Finance di BC. Need Adjustment	1,25	1,25			2,5	0%	0%	0%
Advance	ADV-03	Reimbursement	Feature	Gap	Out	High	1. Move to powerapps - Advance Mgmt 2. Carry over NAV to BC	Melakukan advance di PowerApps. Pemrosesan oleh Finance di BC. Need Adjustment	1,25	1,25			2,5	0%	0%	0%
Advance	ADV-04	Settlement Activity Advance	Feature	Gap	Out	High	1. Move to powerapps - Advance Mgmt 2. Carry over NAV to BC	Melakukan advance di PowerApps. Pemrosesan oleh Finance di BC. Need Adjustment	1,25	1,25			2,5	0%	0%	0%
Advance	ADV-05	Settlement Travel Advance	Feature	Gap	Out	High	1. Move to powerapps - Travel Mgmt 2. Carry over NAV to BC	Melakukan advance di PowerApps. Pemrosesan oleh Finance di BC. Need Adjustment	1,25	1,25			2,5	0%	0%	0%
Advance	ADV-06	Posted Activity Advance	Feature	Gap	Out	High	1. Move to powerapps - Advance Mgmt 2. Carry over NAV to BC	Melakukan advance di PowerApps. Pemrosesan oleh Finance di BC. Need Adjustment	1,25	1,25			2,5	0%	0%	0%
Advance	ADV-07	Posted Travel Advance	Feature	Gap	Out	High	1. Move to powerapps - Travel Mgmt 2. Carry over NAV to BC	Melakukan advance di PowerApps. Pemrosesan oleh Finance di BC. Need Adjustment	1,25	1,25			2,5	0%	0%	0%
Advance	ADV-08	Posted Settlement Activity Advance	Feature	Gap	Out	High	1. Move to powerapps - Advance Mgmt 2. Carry over NAV to BC	Melakukan advance di PowerApps. Pemrosesan oleh Finance di BC. Need Adjustment	1,25	1,25			2,5	0%	0%	0%
Advance	ADV-09	Posted Settlement Travel Advance	Feature	Gap	Out	High	1. Move to powerapps - Advance Mgmt 2. Carry over NAV to BC	Melakukan advance di PowerApps. Pemrosesan oleh Finance di BC. Need Adjustment	1,25	1,25			2,5	0%	0%	0%
Advance	ADV-10	Personal Loan	Feature	Gap	Out	High	1. Move to powerapps - Advance Mgmt 2. Carry over NAV to BC	Melakukan advance di PowerApps. Pemrosesan oleh Finance di BC	1,25	1,25			2,5	0%	0%	0%
Treasury	BANK-01	General Payment	Feature	Gap	Out	High	Carry over NAV to BC		1,25	1,25			2,5	0%	0%	0%
Treasury	BANK-02	Bank Payment Voucher	Feature	Gap	Out	High	Carry over NAV to BC		1,25	1,25			2,5	0%	0%	0%
Treasury	BANK-03	General Cash Receipt	Feature	Gap	Out	High	Carry over NAV to BC		1,25	1,25			2,5	0%	0%	0%
Treasury	BANK-04	Bank Receipt Voucher	Feature	Gap	Out	High	Carry over NAV to BC		1,25	1,25			2,5	0%	0%	0%
Treasury	BANK-05	Fund Transfer Receipt	Feature	Gap	Out	High	Carry over NAV to BC		1,25	1,25			2,5	0%	0%	0%
Treasury	BANK-06	Fund Transfer Region	Feature	Gap	Out	High	Carry over NAV to BC		1,25	1,25			2,5	0%	0%	0%
Treasury	BANK-07	Fund Transfer Site	Feature	Gap	Out	High	Carry over NAV to BC		1,25	1,25			2,5	0%	0%	0%
Treasury	BANK-08	Petty Cash	Feature	Gap	Out	High	Carry over NAV to BC		1,25	1,25			2,5	0%	0%	0%
Treasury	BANK-09	Posted General Payment	Feature	Gap	Out	High	Carry over NAV to BC	Ada bugs dimana field yang belum diisi dari request, namun saat posting terjadi error. Tim Vendor perlu cek bugs dalam coding apabila mau di carry over	1,25	1,25			2,5	0%	0%	0%

Gambar 1. Dynamics NAV feature plan bagian 1

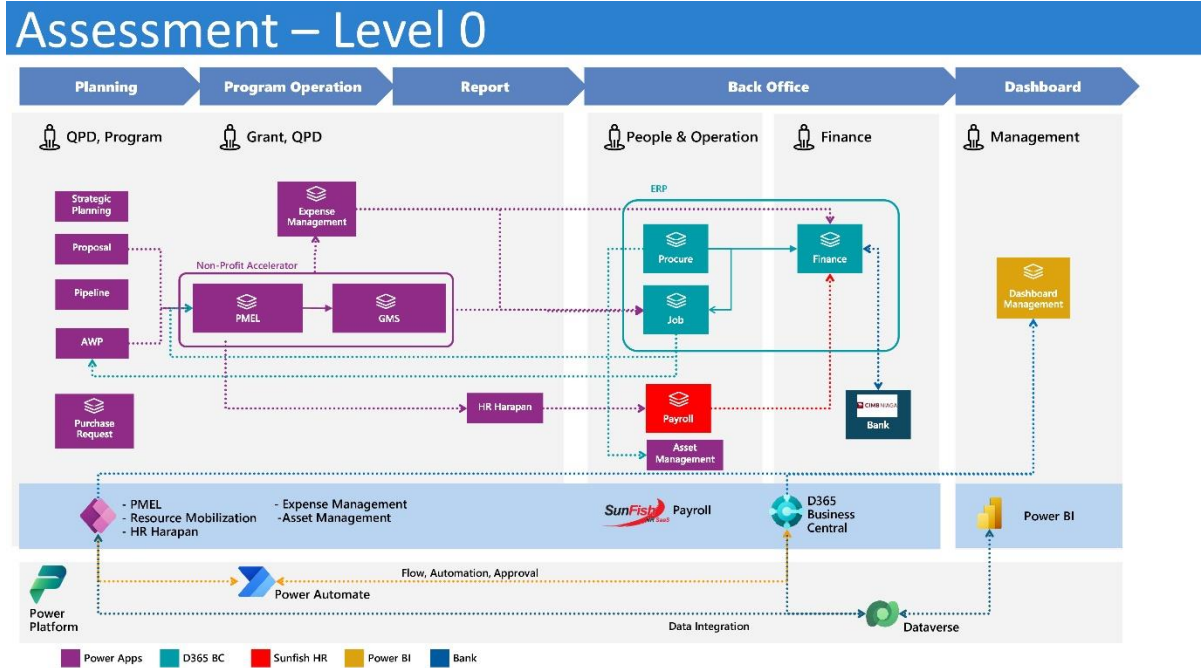
Treasury	BANK-10	Posted Bank Payment Voucher	Feature	Gap	Out	High	Carry over NAV to BC	Ada bugs dimana field yang belum diisi dari request, namun saat posting terjadi error. Tim Vendor perlu cek bugs dalam coding apabila mau di carry over	1,25	1,25		2,5	0%	0%	0%
Treasury	BANK-11	Posted General Cash Receipt	Feature	Gap	Out	High	Carry over NAV to BC	Ada bugs dimana field yang belum diisi dari request, namun saat posting terjadi error. Tim Vendor perlu cek bugs dalam coding apabila mau di carry over	1,25	1,25		2,5	0%	0%	0%
Treasury	BANK-12	Posted Bank Receipt Voucher	Feature	Gap	Out	High	Carry over NAV to BC	Ada bugs dimana field yang belum diisi dari request, namun saat posting terjadi error. Tim Vendor perlu cek bugs dalam coding apabila mau di carry over	1,25	1,25		2,5	0%	0%	0%
Treasury	BANK-13	H2H - Configuration - BCA	Integration	Gap	Out	High	New Custom	Custom	1,5	2	1	4,5	0%	0%	0%
Treasury	BANK-14	H2H - Payment Instruction	Integration	Gap	Out	High	New Custom		1,5	2	1	4,5	0%	0%	0%
Treasury	BANK-15	H2H - Payment Instruction Approval	Integration	Gap	Out	High	New Custom		1,5	2	1	4,5	0%	0%	0%
Treasury	BANK-16	H2H - Payment Submission	Integration	Gap	Out	High	New Custom		1,5	2	1	4,5	0%	0%	0%
Treasury	BANK-17	H2H - Inquiry Payment Status	Integration	Gap	Out	High	New Custom		1,5	2	1	4,5	0%	0%	0%
Treasury	BANK-18	H2H - Payment Settlement	Feature	Gap	Out	High	New Custom		1,5	2	1	4,5	0%	0%	0%
Fixed Asset	FA-01	Fixed Asset Master	Feature	Fit	In							0	0%	0%	0%
Fixed Asset	FA-02	Fixed Asset Acquisition	Feature	Fit	In							0	0%	0%	0%
Fixed Asset	FA-03	Fixed Asset Depreciation	Feature	Fit	In							0	0%	0%	0%
Fixed Asset	FA-04	Fixed Asset Disposal	Feature	Fit	In							0	0%	0%	0%
Fixed Asset	FA-05	Fixed Asset Reclassification	Feature	Fit	In							0	0%	0%	0%
Finance	FIN-01	Chart of Account	Feature	Fit	In							0	0%	0%	0%
Finance	FIN-02	Dimension	Feature	Fit	In							0	0%	0%	0%
Finance	FIN-03	General Journal	Feature	Fit	In							0	0%	0%	0%
Finance	FIN-04	Trial Balance	Report	Fit	In							0	0%	0%	0%
Finance	FIN-05	Finance Reporting	Report	Fit	In							0	0%	0%	0%
Budget	BUD-01	Budget Per- Dimension	Feature	Fit	In							0	0%	0%	0%
Treasury	BANK-19	Exchange Rate Daily BI	Feature	Gap	Out	High	New Custom		1,5	2	1				
Budget	BUD-02	Budget Control	Feature	Gap	Out	High	New Custom	Saat ini di ERP NAV sudah ada, dan berlaku untuk semua transaksi. Namun jika di BC, harus di custom.	1,5	2	1	4,5	0%	0%	0%
Budget	BUD-03	Budget Exchange Rate		Gap	Out	High	New Custom	Carry Over, namun ada adjustment. Saat Revisi budget, belum dan konversi yang remaining balance.	1,5	2	1	4,5	0%	0%	0%
Tax	FIN-46	E-Faktur Numbering	Feature	Fit	In							0	0%	0%	0%
Report	RPT-02	Bank Payment/Receipt Voucher	Report	Gap	Out		Carry over NAV to BC	Milik FINANCE	1,25	1,25	1	3,5	0%	0%	0%
Report	RPT-03	Fund Transfer Region	Report	Gap	Out		Carry over NAV to BC	Milik FINANCE	1,25	1,25	1	3,5	0%	0%	0%
Report	RPT-04	General Cash Receipt	Report	Gap	Out		Carry over NAV to BC	Milik FINANCE	1,25	1,25	1	3,5	0%	0%	0%
Report	RPT-05	General Payment Voucher	Report	Gap	Out		Carry over NAV to BC	Milik FINANCE	1,25	1,25	1	3,5	0%	0%	0%
Report	RPT-06	Fund Transfer Site	Report	Gap	Out		Carry over NAV to BC	Milik FINANCE	1,25	1,25	1	3,5	0%	0%	0%
Report	RPT-08	PC Reconciliation	Report	Gap	Out		Carry over NAV to BC	pccty cash, Milik FINANCE	1,25	1,25	1	3,5	0%	0%	0%
Report	RPT-10	Purchase Requisition	Report	Gap	Out		Carry over NAV to BC	Milik GS	1,25	1,25	1	3,5	0%	0%	0%
Report	RPT-11	Purchase Order	Report	Gap	Out		Carry over NAV to BC	Milik GS	1,25	1,25	1	3,5	0%	0%	0%
Report	RPT-13	Less than equal 1 Month (Lumpsum)	Report	Gap	Out		Carry over NAV to BC		1,25	1,25	1	3,5	0%	0%	0%
Report	RPT-14	More than 1 month (Lumpsum)	Report	Gap	Out		Carry over NAV to BC		1,25	1,25	1	3,5	0%	0%	0%
Report	RPT-15	Recruitment Requisition Form	Report	Gap	Out		Carry over NAV to BC	Honorar saat masukin RRF, pilih jangka waktu contract, diinput name konsultan card - contract	1,25	1,25	1	3,5	0%	0%	0%
Report	RPT-16	Travel Advance/Authorize	Report	Gap	Out		Carry over NAV to BC	Power Apps (Management Expense), Milik FINANCE	1,25	1,25	1	3,5	0%	0%	0%
Report	RPT-17	Fund Transfer	Report	Gap	Out		Carry over NAV to BC	Milik FINANCE	1,25	1,25	1	3,5	0%	0%	0%
Report	RPT-18	Journal Voucher	Report	Gap	Out		Carry over NAV to BC	Milik FINANCE	1,25	1,25	1	3,5	0%	0%	0%
Report	RPT-19	Posted Travel Adv./Authorize	Report	Gap	Out		Carry over NAV to BC	Power Apps (Management Expense)	1,25	1,25	1	3,5	0%	0%	0%
Report	RPT-21	Purchase Order Archived	Report	Gap	Out		Carry over NAV to BC	Form Purchase Order	1,25	1,25	1	3,5	0%	0%	0%
Report	RPT-22	Journal Voucher 1	Report	Gap	Out		Carry over NAV to BC	Milik FINANCE	1,25	1,25	1	3,5	0%	0%	0%
Report	RPT-24	Contract 1 Month	Report	Gap	Out		Carry over NAV to BC	Jenis contract yang bisa dijadikan satu	1,25	1,25	1	3,5	0%	0%	0%
Report	RPT-26	Expense Claim	Report	Gap	Out		Carry over NAV to BC	For reimbursement, POWER APPS	1,25	1,25	1	3,5	0%	0%	0%
Report	RPT-27	Sub Grant Requisition	Report	Gap	Out		Carry over NAV to BC	Milik GRANT	1,25	1,25	1	3,5	0%	0%	0%
Report	RPT-28	Petty Cash Payment	Report	Gap	Out		Carry over NAV to BC	Milik FINANCE	1,25	1,25	1	3,5	0%	0%	0%
Report	RPT-29	General Voucher	Report	Gap	Out		Carry over NAV to BC	Milik FINANCE	1,25	1,25	1	3,5	0%	0%	0%
Report	RPT-30	Posted General Voucher	Report	Gap	Out		Carry over NAV to BC	Milik FINANCE	1,25	1,25	1	3,5	0%	0%	0%
Report	RPT-31	Posted Petty Cash Payment	Report	Gap	Out		Carry over NAV to BC	Milik FINANCE	1,25	1,25	1	3,5	0%	0%	0%
Report	RPT-32	Settlement Advance Report	Report	Gap	Out		Carry over NAV to BC	Milik FINANCE	1,25	1,25	1	3,5	0%	0%	0%
Report	RPT-33	Posited Sett. Activity Advance	Report	Gap	Out		Carry over NAV to BC	BC and POWER APPS	1,25	1,25	1	3,5	0%	0%	0%
Report	RPT-36	Bank Reconciliation Wdly	Report	Gap	Out		Carry over NAV to BC	Milik GRANT	1,25	1,25	1	3,5	0%	0%	0%
Report	RPT-37	Project Fund Balance	Report	Gap	Out		Carry over NAV to BC	Milik GRANT	1,25	1,25	1	3,5	0%	0%	0%
Report	RPT-38	R3-Report	Report	Gap	Out		Carry over NAV to BC	Gak bisa digunakan. Karena Tidak bisa Pake weighted rate, Adjustment	1,25	1,25	1	3,5	0%	0%	0%
Report	RPT-39	Dim Value Combination	Report	Gap	Out		Carry over NAV to BC	Report, Wahyuadi	1,25	1,25	1	3,5	0%	0%	0%
Report	RPT-40	R3-Report Notes	Report	Gap	Out		Carry over NAV to BC	Milik GRANT	1,25	1,25	1	3,5	0%	0%	0%
Report	RPT-43	Employee - Summary Aging	Report	Gap	Out		Carry over NAV to BC	Milik FINANCE	1,25	1,25	1	3,5	0%	0%	0%
Report	RPT-44	Report Actual & Budget	Report	Gap	Out		Carry over NAV to BC	Milik GRANT	1,25	1,25	1	3,5	0%	0%	0%
Report	RPT-45	Procurement Report	Report	Gap	Out		Carry over NAV to BC	Milik GS, Need Adjustment	1,25	1,25	1	3,5	0%	0%	0%
Report	RPT-50	FA Voucher	Report	Gap	Out		Carry over NAV to BC	Duplicate with Journal Voucher? Milik FINANCE	1,25	1,25	1	3,5	0%	0%	0%

Gambar 2. Dynamics NAV feature plan bagian 2

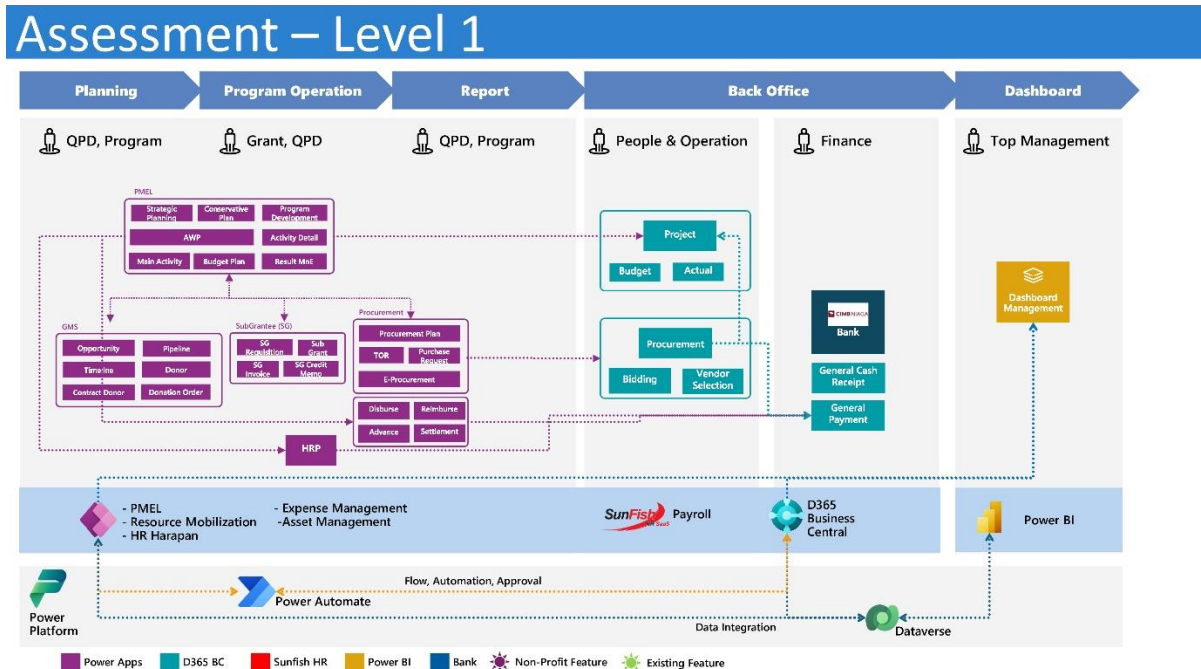
Report	RPT-51	Cash Flow	Report	Gap	Out		Carry over NAV to BC	Seharusnya di PC sudah ada. Template mau di adjust.	1,25	1,25	1	3,5	0%	0%	0%
Report	RPT-66	Dim Value Combination 2	Report	Gap	Out		Carry over NAV to BC	Milik FINANCE	1,25	1,25	1	3,5	0%	0%	0%
Report	RPT-67	Dim Value Combination 3	Report	Gap	Out		Carry over NAV to BC	Duplicate with Dim Value Combination	1,25	1,25	1	3,5	0%	0%	0%
Report	RPT-71	Statement of Fin. Position	Report	Gap	Out		Carry over NAV to BC	Duplicate with Dim Value Combination	1,25	1,25	1	3,5	0%	0%	0%
Report	RPT-72	Statement of Activities	Report	Gap	Out		Carry over NAV to BC	Adjust	1,25	1,25	1	3,5	0%	0%	0%
Report	RPT-73	Statement of Cash Flow	Report	Gap	Out		Carry over NAV to BC	Adjust	1,25	1,25	1	3,5	0%	0%	0%
Report	RPT-77	Report Procurement	Report	Gap	Out		Carry over NAV to BC	Duplicate, Milik GS	1,25	1,25	1	3,5	0%	0%	0%
Report	RPT-85	More than 1 month (Monthly)	Report	Gap	Out		Carry over NAV to BC	Satu template - Beda informasi, Milik PnC	1,25	1,25	1	3,5	0%	0%	0%
Report	RPT-86	Pajak & Bruto Konsultan	Report	Gap	Out		Carry over NAV to BC	Data WPP, Pyriti Pajak	1,25	1,25	1	3,5	0%	0%	0%
Report	RPT-87	Advance Aging	Report	Gap	Out		Carry over NAV to BC	Milik FINANCE	1,25	1,25	1	3,5	0%	0%	0%
Report	RPT-89	Payment Request	Report	Gap	Out		Carry over NAV to BC	Milik FINANCE	1,25	1,25	1	3,5	0%	0%	0%
Report	RPT-90	Pajak & Bruto Konsultan Ori	Report	Gap	Out		Carry over NAV to BC	Duplicate with Pajak & Bruto Konsultan	1,25	1,25	1	3,5	0%	0%	0%
Report	RPT-91	Postical Expenses Claim	Report	Gap	Out		Carry over NAV to BC	Milik FINANCE	1,25	1,25	1	3,5	0%	0%	0%
Report	RPT-92	Advance Aging by Posting Date	Report	Gap	Out		Carry over NAV to BC	Milik FINANCE	1,25	1,25	1	3,5	0%	0%	0%
Report	RPT-93	AR Aging	Report	Gap	Out		Carry over NAV to BC	Milik FINANCE	1,25	1,25	1	3,5	0%	0%	0%
Report	RPT-95	Report API BNI	Report	Gap	Out		Carry over NAV to BC	Connect to Host to Host	1,25	1,25	1	3,5	0%	0%	0%

Gambar 3. Dynamics NAV feature plan bagian 3

2. High-level architecture

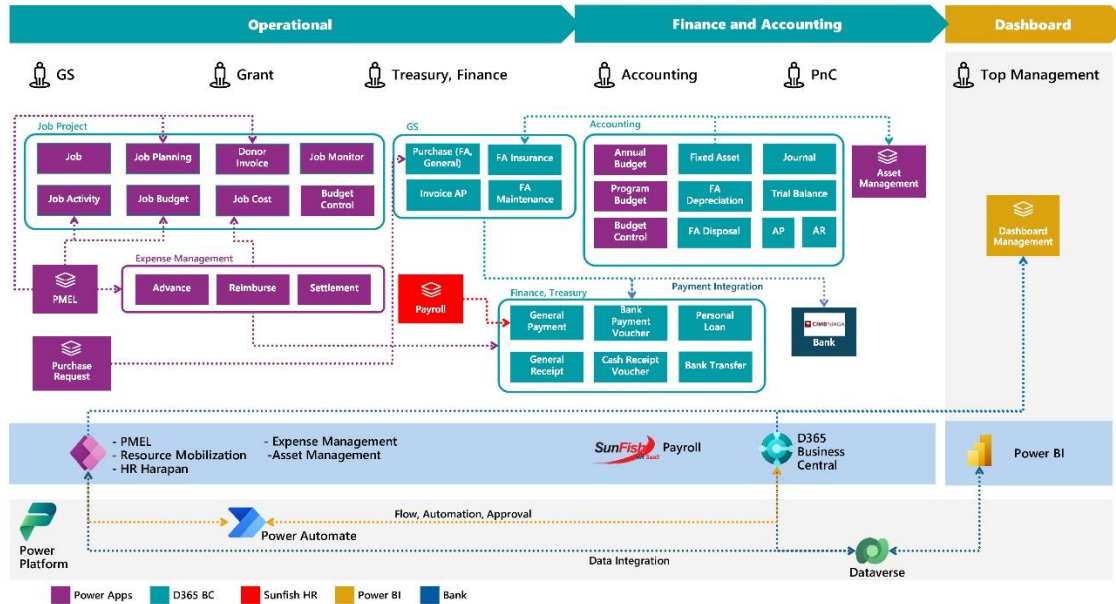


Gambar 4. Level 0 architecture



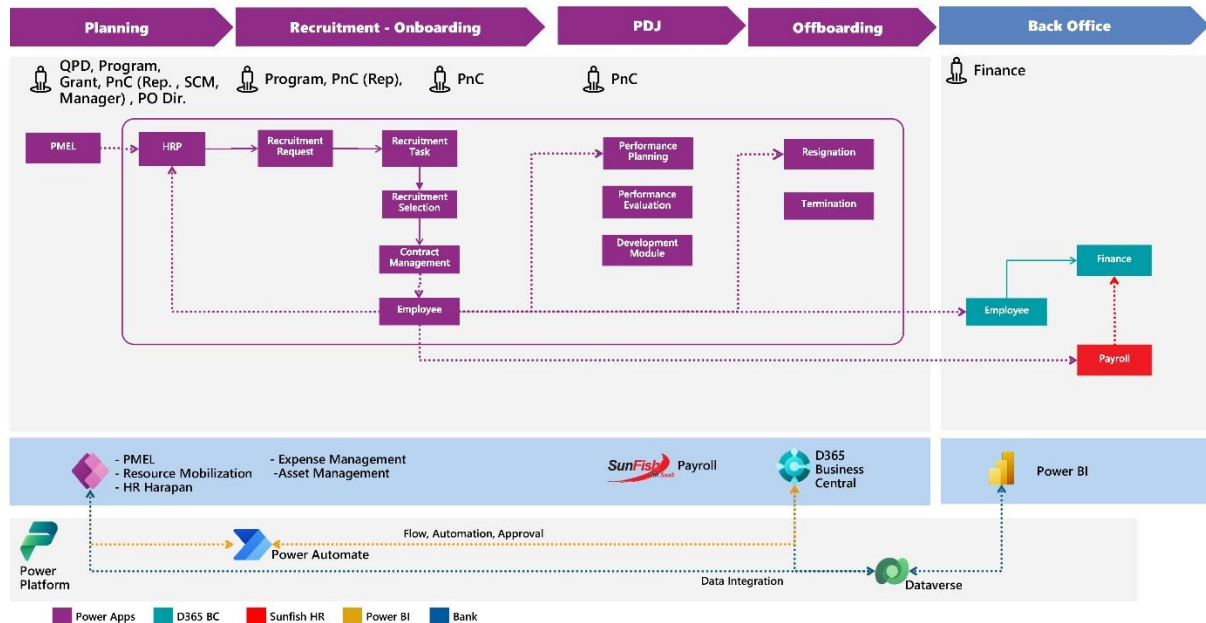
Gambar 5. Level 1 architecture

Assessment – Level 1 (Dynamics 365 Business)



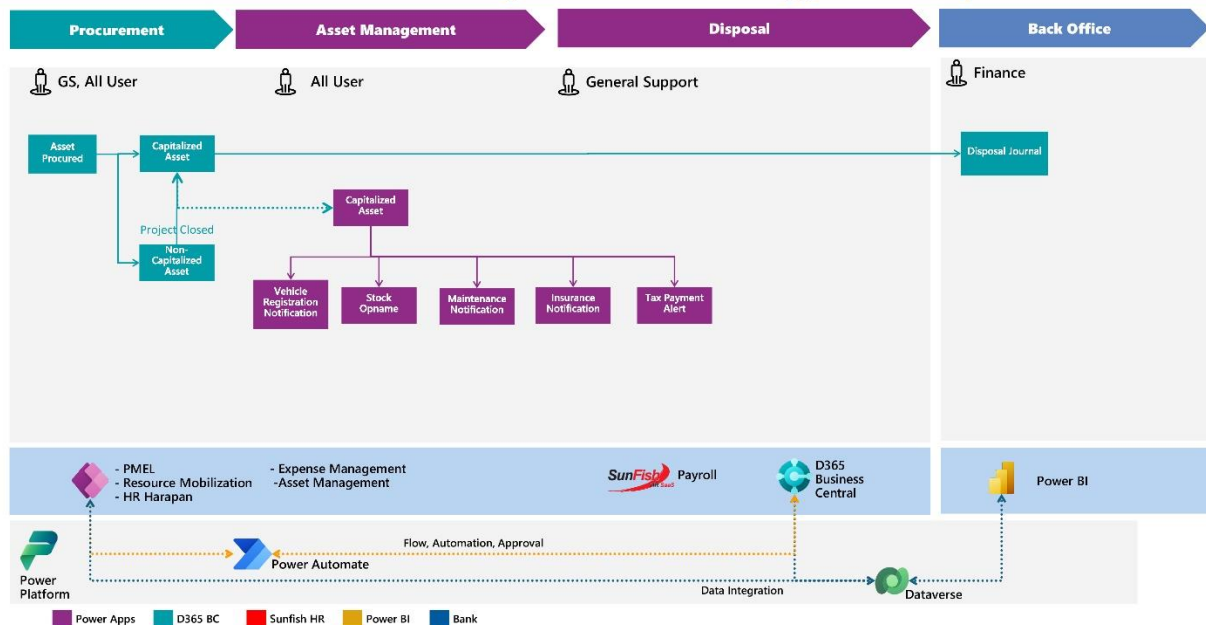
Gambar 6. Level 1 Business Central architecture

Assessment – Level 1 (HRP, HRIS)



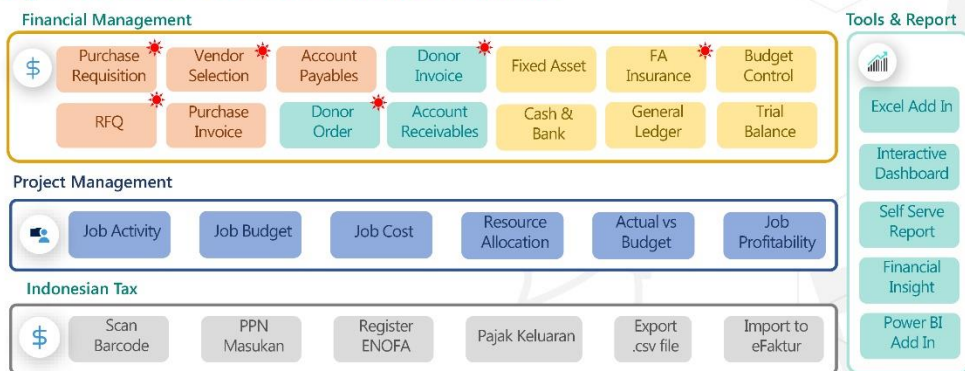
Gambar 7. Level 1 HRP architecture

Assessment – Level 1 (Asset Management)



Gambar 8. Level 1 Asset Management architecture

Dynamics 365 Business Central



Custom Module/ Enhancement/
Localization Module by Vendor
Standard Module

Gambar 9. Business Central Module Map

Adapun informasi-informasi tambahan di atas sifatnya **tidak wajib diikuti, melainkan hanya sebagai acuan**. Vendor dipersilakan untuk memberikan proposal berdasarkan pengalaman dan penilaian masing-masing vendor.